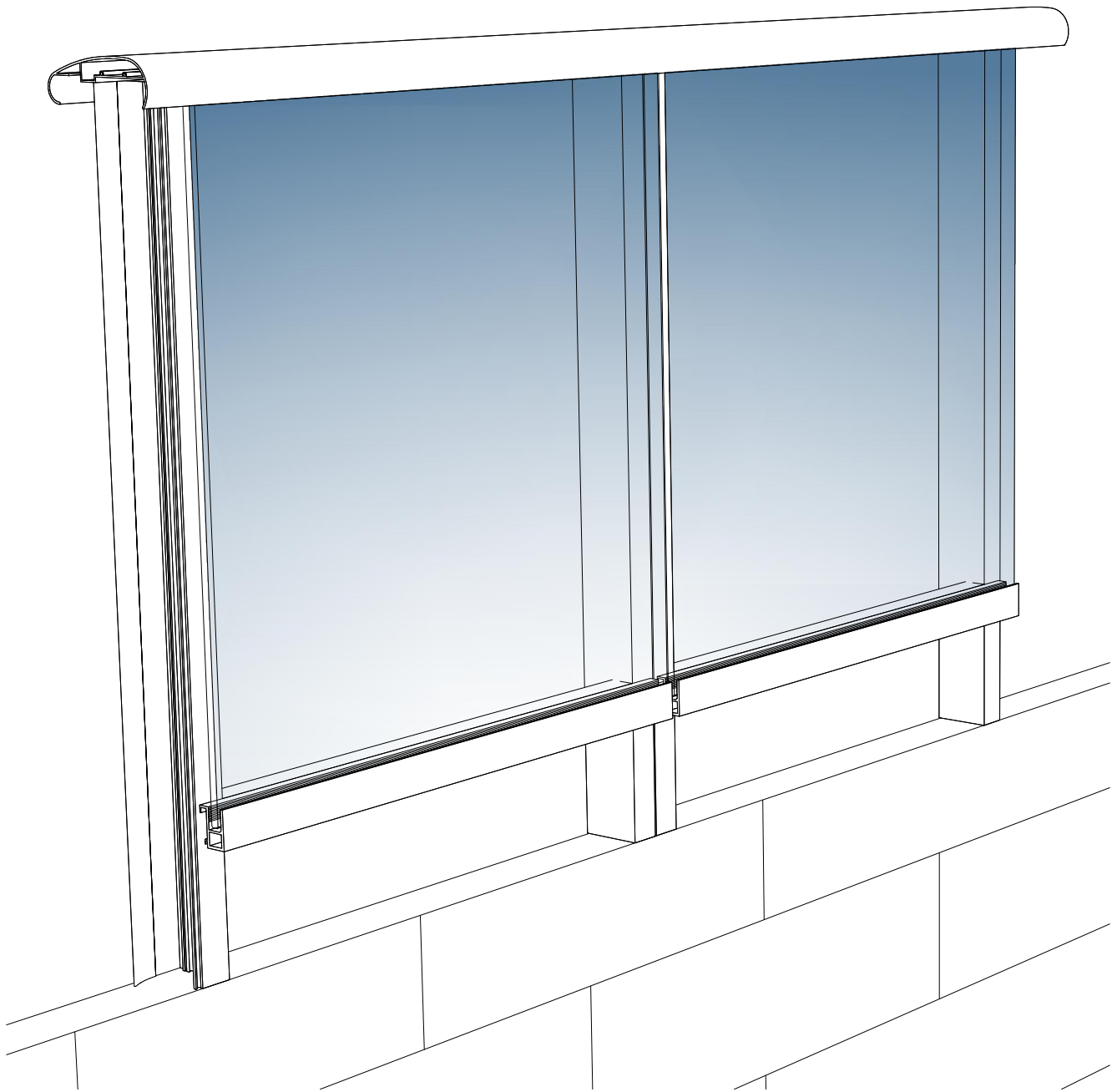


ES-RL3030

RAILING



DESCRIPTION

ES-RL3030 is a modular glass railing system. The aluminum frames are pre-assembled from the factory and embedded into concrete on site. Verticals mullions slides into each other to assemble the railing. Glass panels are placed on the horizontal hooks and secured with the cap.

SYSTEM DESCRIPTION:

- 90° Corner profile available
- Cap width: 5 3/4"
- Mullion size: 3" x 3"
- Hidden verticals
- Designed for 7/16" laminated glass.

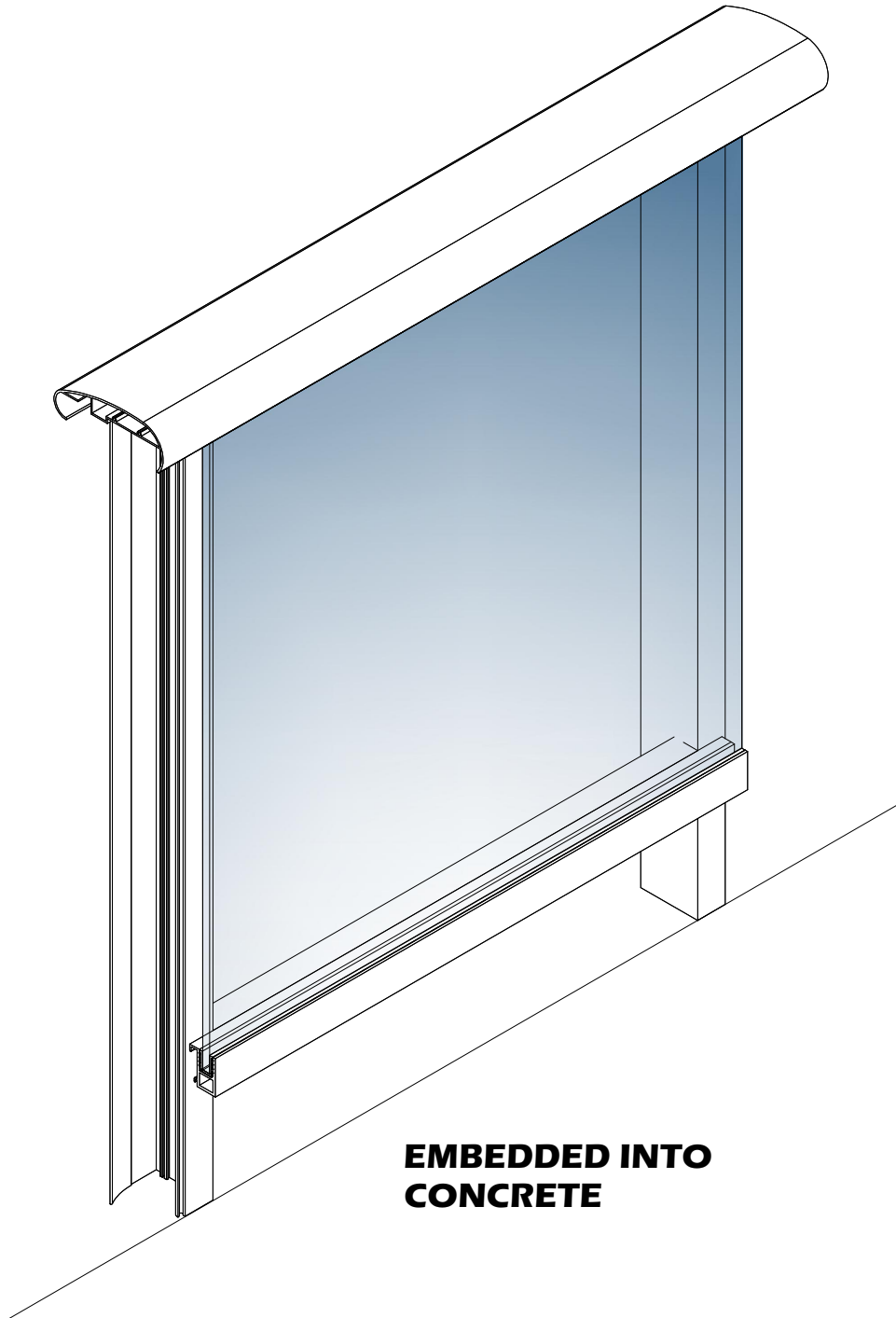
CHARACTERISTICS:

- For embedding into concrete
- Design Load: +/- 120 psf

BENEFITS:

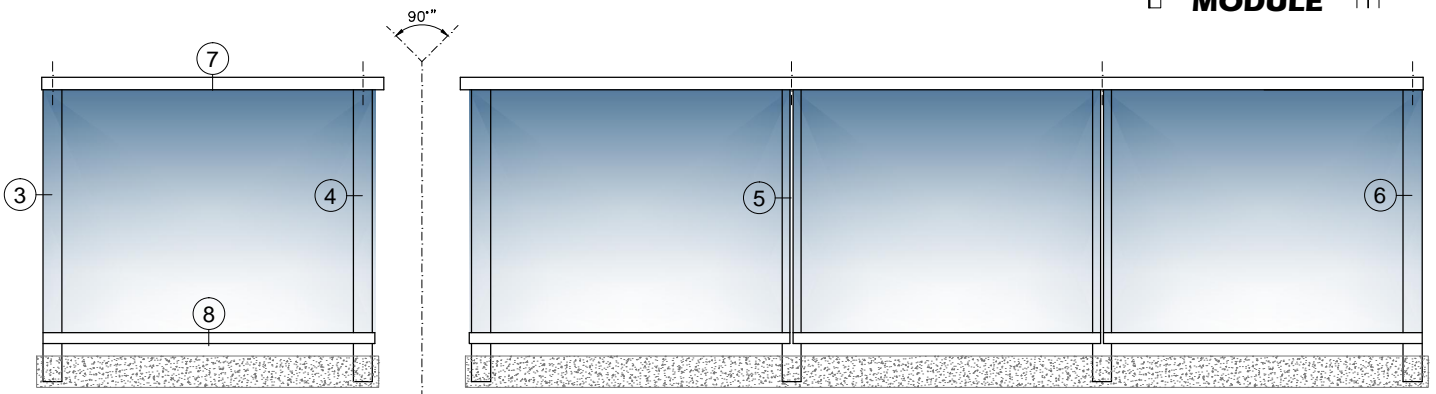
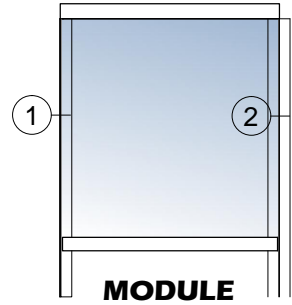
- Versatile
- Corner design
- Tested and Certified TAS202, ANSI Z97, ASTM E935
- Durability and aesthetics

MODULE CONFIGURATION

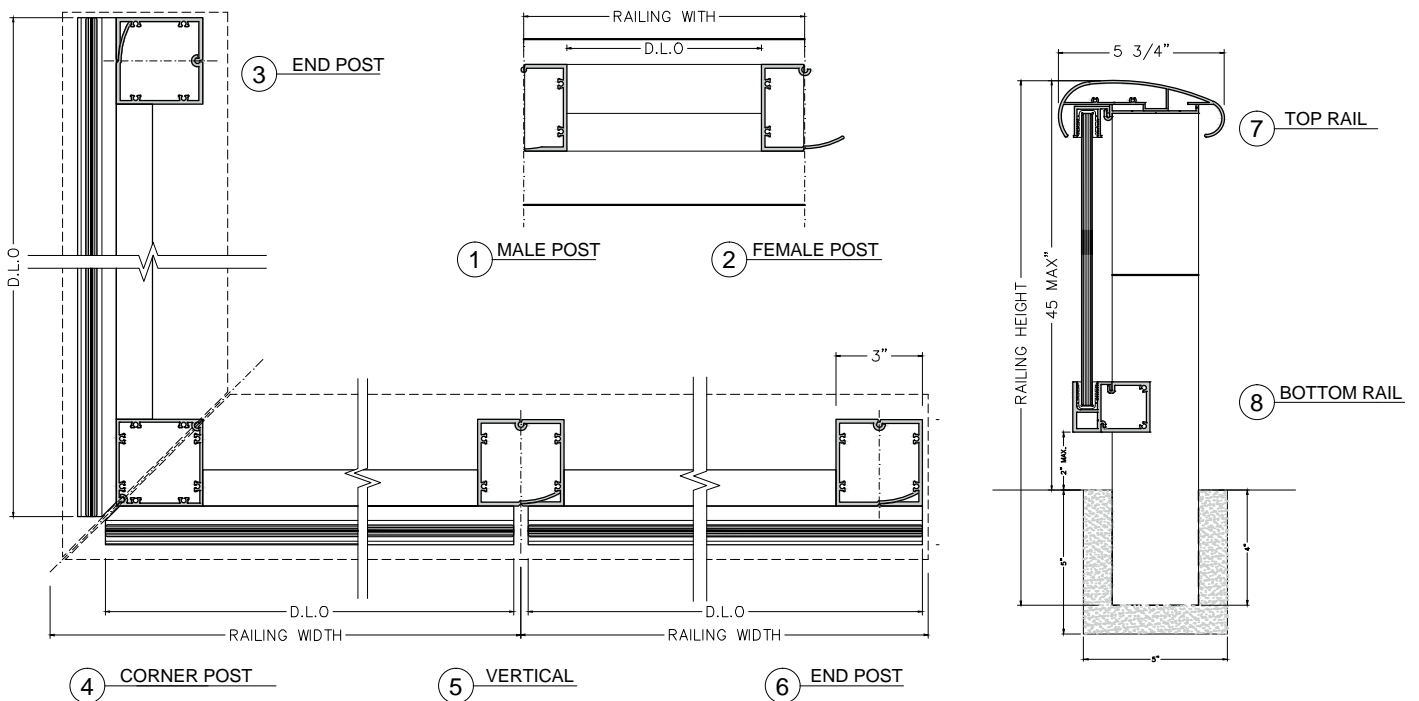


**EMBEDDED INTO
CONCRETE**

DETAILS

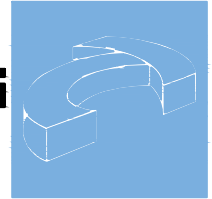


ASSEMBLED RAILING



GLASS

TECNOGLASS



LAMINATED GLASS

3/16" clear tempered glass + 0.035" sentry glass
+ 3/16" clear tempered glass

FINISHES

PAINT
SERIGRAPHY
DIGITAL PRINTING

For more information about glass condition and finishes, consult **TECNOGLASS®**.

ALUMINUM

ALLOY 6063
ALLOY 6005

FINISHES

- | | |
|-----------------------------|------------|
| • Acrinar Arcadia Silver | UCFX10003W |
| • ESP White | UC67122 |
| • Duranar Bone White | UC43350 |
| • Polycrom LG Bronze | UC107473 |
| • Polycrom III KF-200 | UC97603 |
| • Duranar Hateras white | UC105261 |
| • Duranar Sanibel Sand | UC105189 |
| • Duranar Caribbean Creme | UC105191 |
| • Polycrom Bronze | UC98316 |
| • Duranar Bermuda Bronze | UC105262 |
| • Duranar Bocatone | UC105190 |
| • Duranar Bugle Gray | UC85339 |
| • Polycrom III Signal White | UC98884 |



SILICONE

Every silicone used by ESWindows are neutral based which guarantees its durability and excellent performance in the open. The two types of silicone used are:

STRUCTURAL SILICONE:

Sealant capable of supporting high loads. This silicone is commonly used to support the glass in facades and hurricane resistant products.

- Dowcorning 983
- Dowcorning 995

WEATHER SEALANT SILICONE:

Used to seal profile unions to avoid air and water infiltration. Allows sound control.

- Dowcorning 791 (Black - White)
- Dowcorning 1199

ENERGÍA SOLAR ESWINDOWS

**Av. Circunvalar at 100 mts of Via 40 Las Flores
Barranquilla, Colombia PBX: (57 5) 3664600
service@eswllc.com, PBX: (+1) 305 5074545**

DRAWN BY SARIEL GONZALEZ M.