

PROJECT OUT/FIXED WINDOW

www.eswindows.com

ES-5000/ES-5100



System description

- ES-5000 is a high impact project-out window. The system integrates with its fixed window version ES-5100.
- LMI (Large missile impact) and SMI (Small missile impact).
- Frame depth: 54mm (2 1/8").
- Designed for: 9mm (3/8") to 12mm (1/2") laminated glass & 20mm (3/4") insulated-laminated glass.

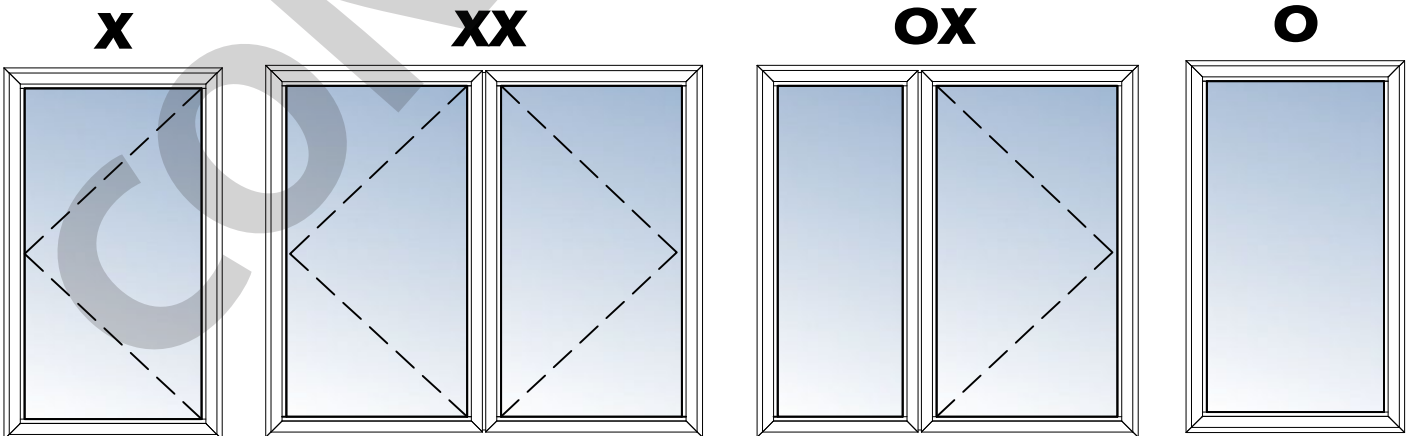
Features

- High-performance stainless steel hinges.
- Reinforcement at vent corners and frame.
- Operator and multipoint lock.
- Muntins option.
- Fully weather stripping.
- Anodized and painted finishes available.
- Aluminum frame and fiberglass mesh screens available.

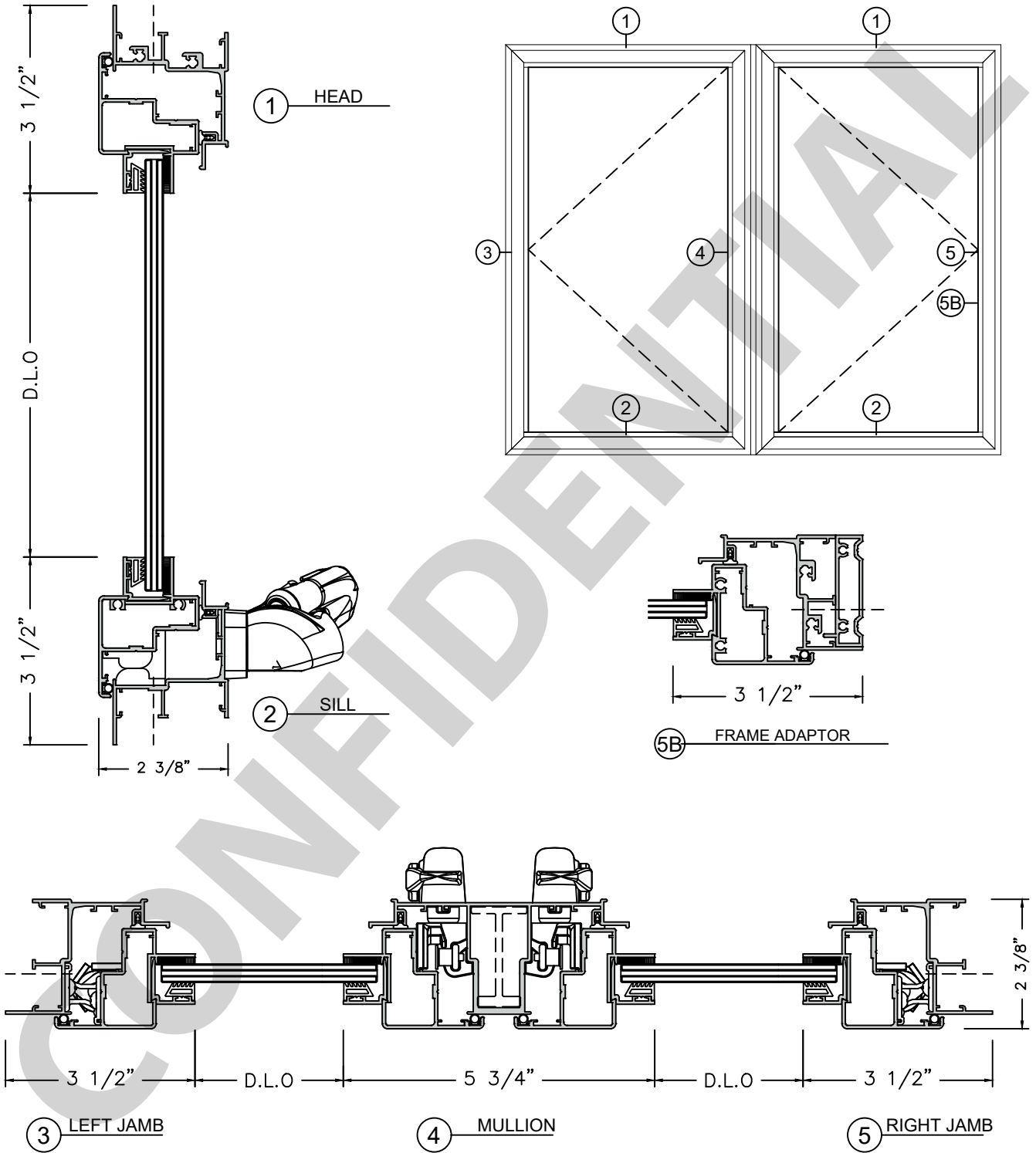
Test & Certifications

- Water infiltration resistance: 12.75 psf.
- Design load: +90/-90 psf.

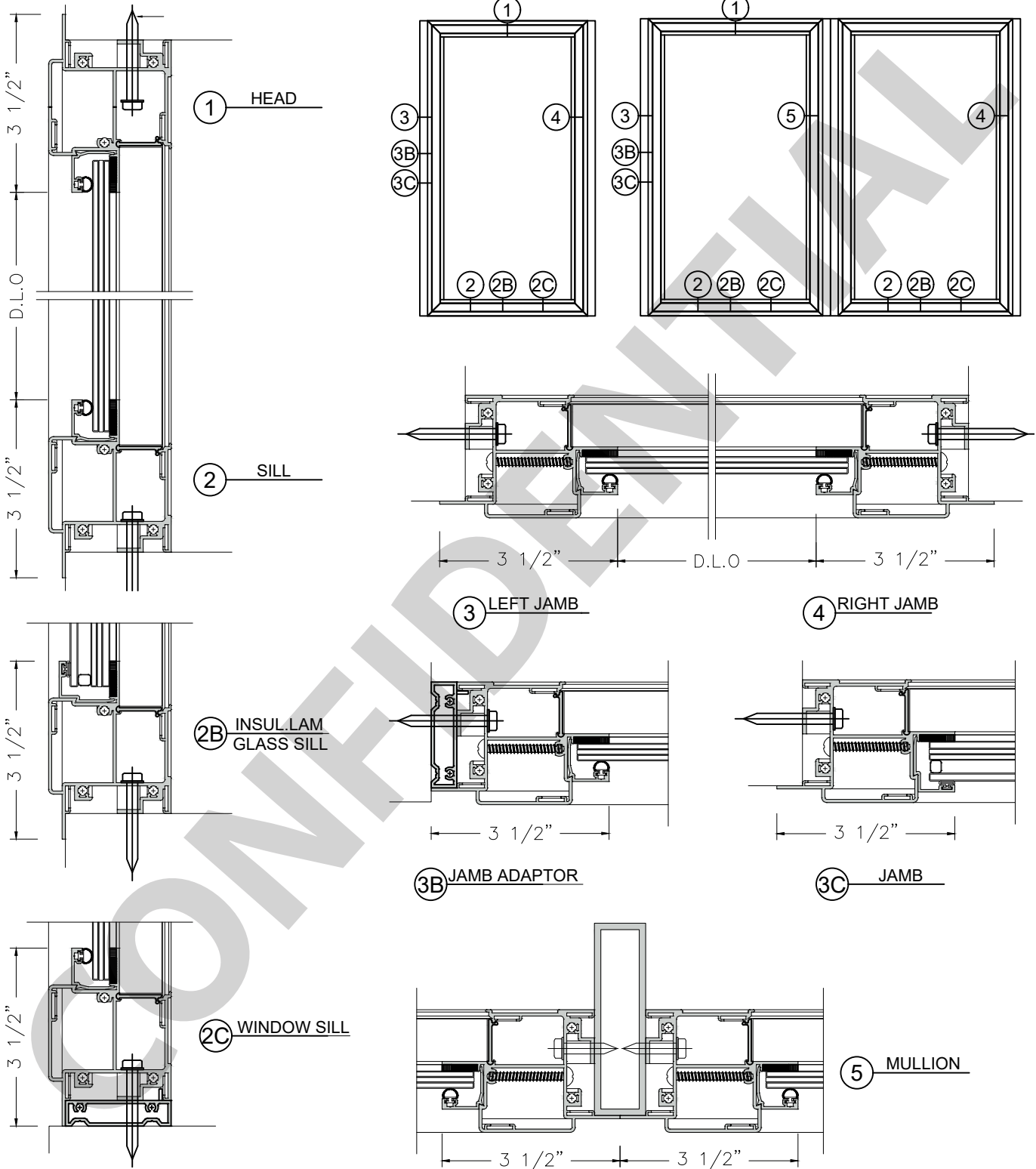
Configurations



System details

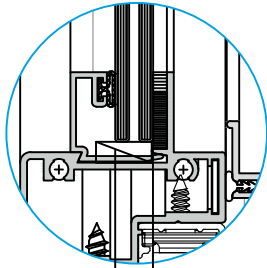


System details



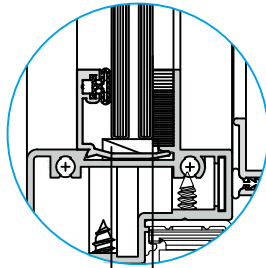
Glazing options

Laminated glass



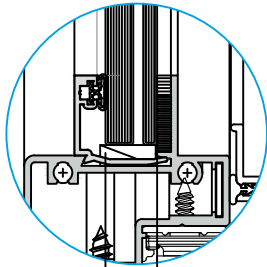
5/16"

Laminated glass



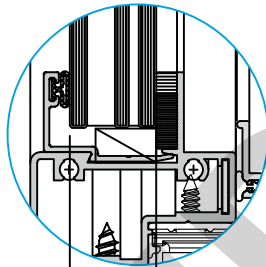
3/8"

Laminated glass



7/16"

Insulating laminated glass



3/4"

Designed for 5/16" laminated glass:

- 1/8" Heat Stren'd + 0.090 Interlayer Butacite PVB + 1/8" Heat Stren'd.
- 1/8" Heat Stren'd + 0.090 Interlayer SENTRYGLAS + 1/8" Heat Stren'd.

Designed for 3/8" laminated glass:

- 5/32" Heat Stren'd + 0.090 Interlayer Butacite PVB + 1/8" Heat Stren'd.
- 5/32" Heat Stren'd + 0.075 Interlayer SENTRYGLAS + 1/8" Heat Stren'd.

Designed for 7/16" laminated glass:

- 1/4" Heat Stren'd + 0.090" Interlayer Butacite PVB + 1/8" Heat Stren'd.

Designed for 3/4" insulating laminated glass:

- 5/32" Temp. Glass or Heat Stren'd + 1/4" air spacer + 1/8" Heat Stren'd + 0.090 Interlayer Butacite PVB + 5/32" Heat Stren'd.
- 5/32" Temp. Glass or Heat Stren'd + 1/4" air spacer + 1/8" Heat Stren'd + 0.090 Interlayer SENTRYGLAS + 5/32" Heat Stren'd.

GLASS FINISH:

PAINTED, SERIGRAPHY, DIGITAL PRINTED

For more information please contact TECNOGLASS® or visit www.tecnoglass.com

Aluminum

ALLOY 6063-T6
ALLOY 6005-T5

For further information about aluminum and finishes, consult ALUTIONS®.

Sealant

APROVED SILICONE SEALS:

WEATHERPROOFING SILICONE:

Used to seal profile unions to avoid air and water infiltration.

- Dowsill 791

STRUCTURAL SILICONE:

Besides acting as a sealant it is capable to support high loads. This silicone is commonly used to support the glass in facades and hurricane resistant products.

- Dowsill 983
- Dowsill 995

Measurements

Maximum sizes:

36" x 76" for X configurations, ES-5000.
72" x 76" for XX configurations, ES-5000.
51" x 76" for ES-5100.