

imagine
extraordinary



ES | Commercial Products
Hurricane Rated



Our products embody strength, durability, safety and most of all, a vision that inspires us every day: Quality

We design and manufacture the best impact-resistant windows and doors that incorporate glass and aluminum profiles for mid and high-rise residential and commercial projects in America.

Since 1983 we specialize in developing and providing solutions to the toughest conditions for South Florida's high winds, hurricanes and tropical storms, responding efficiently to the request of architects, general contractors and developers.

ESWINDOWS IMPACT-RATED WINDOWS ADVANTAGES

Large and small missile impact rated

Meets the nation's toughest hurricane requirements for South Florida's High Velocity Hurricane Zone

High-performance energy-efficient Low-E glass options by industry leader Tecnoglass

Thick aluminum framing for superior thermal resistance and durability

Adaptability to any project necessities

Heat strengthened glass as a standard feature

Corrosion-resistant hardware and fasteners as a standard

Reduce external noise

Reduce heat transmittance

PRODUCTS

Curtain Wall

ES-CS1325
ES-7525
GW-7000

Window Wall

ES-7000
ES-WW1032
ES-WW5037 / WW5037T
ES-8860
GW-5250

Storefronts

ES-8000
ES-8000T

Windows & Doors

500Y
PH-4400
HR-2600
2400 ST
DM-12
ES-9000
ES-PH3200

Railings

ES-RL3030
ES-RL3525

14 LeCount Place
New Rochelle, NY



CURTAIN WALL



ESWINDOWS' curtain walls are pre-assembled and pre-glazed systems with maximum resistance, durability and efficiency in their design. These products have the most competitive quality and performance characteristics for blast resistance, hurricane resistance and thermally broken, offering architects the best possible product on site.

ES-CS1325

The ES-CS1325 is a stick-type façade system in which the frames, mullions and glass are installed and interconnected piece by piece on site. The use of EPDM isolated gaskets makes it a thermally improved system with superior structural qualities.

Features

- Frame depth: 13"
- Sightline frame: 2 1/2"
- Designed for 1 5/16" insulating laminated glass and 9/16" laminated glass
- Maximum size: 54 1/4" width x 290 5/8" height
- EPDM insulating or silicone gasket between the inner profile and outer covers
- 90° outside corner available
- Angled corner profiles available
- Outside glazed
- Assembled on site, can be assembled with other systems, such as doors and windows
- Allows modifications on site
- Excellent thermal performance
- No drainage accessories

Performances

- Tested design load: +150/-150 PSF.
- Tested water infiltration: 23,75 PSF.
- U-value: 0.41 (1/4 SB70XL + Arg + 1/4 Clear + 090SGP + 1/4 Clear)



ES-7525

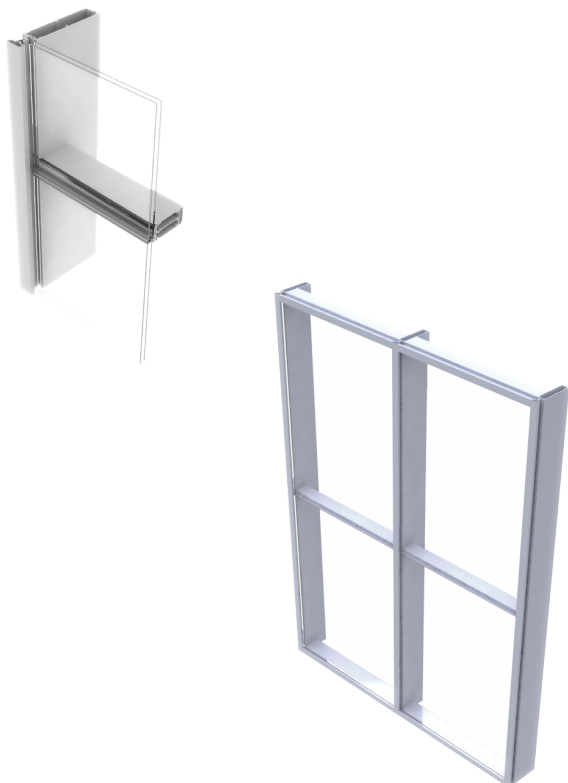
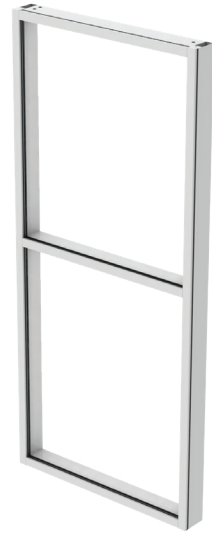
The ES-7525 is an impact and blast resistant, thermally improved, pressure-glazed, curtain wall system with 2 1/2" sightline and 7 1/2" mullion depth. This product is compatible with the ES-9000 impact door.

Features

- Frame depth: 7 1/2"
- Sightline frame: 2 1/2"
- Outside glazed
- Shear block construction
- Captured verticals and horizontals, as well as SSG vertical mullions as SSG vertical mullions and captured horizontals
- Designed for 9/16" laminated glass and 1 5/16", insulating laminated glass and non-impact 1" insulating glass, with 1/4" spandrel glass adaptor
- Maximum size: 60" width x 196 3/4" height
- Wet glazing for LMI and dry glaze for SMI
- Integral door adaptor
- EPDM isolator gasket
- 90° outside corner adaptor
- Open horizontals available for ease of installation
- Variety of accessories, including perimeter anchors, pocket fillers, joint plugs, etc.
- Integrated vents

Performances

- Tested design load: +100/-100 PSF.
- Tested water infiltration: 20 PSF.
- U-value: 0.40 (1/4 Solarban 70XL + AIR +1/4 Clear + 090SGP + 1/4 Clear)



GW-7000

GW-7000 is a pre-assembled and pre-glazed Glass wall systems, ready to be installed. The GW-7000 can be optionally integrated with a railing system.

Features

- Frame depth: 7"
- Sightline: 3 1/2"
- Designed for various Insulated and laminated glass options.
- Maximum tested size: 51" width x 150" height
- Inside and outside corner options
- Top parapet or railing options
- SSG and captured options
- Pre-assembled & pre-glazed
- Anodized, painted and wood grain finishes available

Performances

- Large and small missile impact
- Tested design load: +100/-140 PSF.
- Tested water infiltration: 15 PSF.

Paramount Miami Worldcenter

Miami, FL



WINDOW WALL



ESWINDOWS' window walls family are aluminum framed systems use primarily on mid and high-rise commercial and residential buildings. These products are prefabricated and can accommodate multiple conditions while saving installation time at the job site.

ES-7000

ES-7000 is a pre-assembled and pre-glazed window wall systems, ready to be installed. The ES-7000 is compatible with the ES-9000 impact door and it is fabricated with screw spline construction.

Features

- Frame depth: 6 1/8"
- Sightline: 3 1/4"
- Flush glazed
- Designed for 9/16" laminated glass and 1 5/16" insulating laminated glass
- ES-7100 SMI (Small missile) ES-7000 LM (Large missile impact)
- Maximum size: 48" width x 144" height (Up to 156" in ES-7500 version)
- Integral door adaptor
- Leveling screws at bottom anchors
- Pre-Assembled and Pre-Glazed
- Screw covers

Performances

- Large and small missile impact
- Design loads: +125/ -150 PSF.
- Tested water infiltration: 15 PSF.
- U-value: 1.07 (1/4 SB70XL + 090SGP + 1/4 Clear)



ES-WW1032

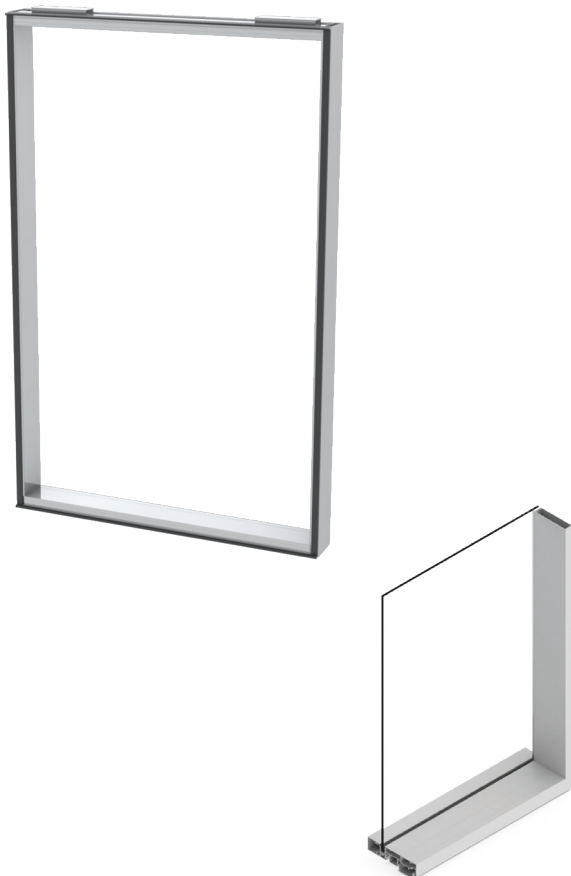
The ES-WW1032 is a 10 1/2" impact resistant window wall system. This product is compatible with the ES7000 window wall. It features four side captured glazing and deeper verticals for larger spans.

Features

- Designed for 9/16" laminated glass and 1 5/16" insulating laminated glass
- Frame depth: 10 1/2" laminated, 11 1/4" insulating laminated
- Sightline: 3 1/4"
- Maximum size: 60" x 192"
- Pre-Assembled and Pre-glazed
- Anodized, painted or wood grain finishes available
- Various aesthetics options
- Enhanced resistance to air and water infiltration
- Versatile
- Durability
- Easy manipulation and installation

Performances

- Large missile impact
- Design load: +138/-138 PSF.
- Tested water infiltration: 21 PSF.



ES-8860

The ES-8860 is a 7" window wall designed to meet the performance and aesthetic requirements for a wide range of applications.

Features

- Frame depth: 7"
- Designed for 9/16" laminated glass
- Maximum size per panel: 50 1/2" width x 175" height
- SSG and captured glaze options
- Integrated glass slab cover available
- Integrated vents
- Project out window available
- Pre-assembled & pre-glazed

Performances

- Design load: +90/-90 PSF.
- Water infiltration: 17.1 PSF.
- Air infiltration: 6.24 PSF.

GW-5250

The GW-5250 is a thermally improved impact rated window wall. This product meets the most stringent Miami Dade County specifications, and its design is attractive for a wide range of applications.

Features

- Frame depth: 7 1/2" or 6 7/8"
- Sightline frame: 2 1/2"
- Designed for laminated glass and insulating laminated glass
- Maximum panel size:
 - 48" width x 288" height (double span)
 - 48" width x 144" height (single span)
- SSG and captured options on intermediate horizontals and verticals
- Extended beauty caps available
- Head receptor optional
- Inside and outside corner
- Pre-assembled and pre-glazed
- 90 degrees outside corners
- Transitions from laminated to insulated glass

Performances

- Large and small missile impact
- Tested design load: +130/-130 PSF. SMI and LMI
- Tested water infiltration: 19.5 PSF.
- Air infiltration: 6.24 PSF.
- U-value: 0.33 (1/4 SB70XL + Arg + 1/4 Clear + 060PVB + 1/4 Clear)



HYATT CENTRIC

100 EAST LAS OLAS

100

HYATT
CENTRIC
100 LAS OLAS
FORT LAUDERDALE

HELP STOP THE SPREAD

- WASH YOUR HANDS
- WEAR YOUR MASK
- AVOID CLOSE CONTACT
- STAY HOME IF YOU ARE SICK
- KEEP YOUR DISTANCE

HYATT CENTRIC

HYATT CENTRIC
100 EAST LAS OLAS
FORT LAUDERDALE, FLORIDA



STOREFRONTS

ESWINDOWS' storefront systems are designed to meet the performance and aesthetic requirements for a wide range of applications, perfectly compatible with our curtain walls, window walls, windows and doors.

ES-8000

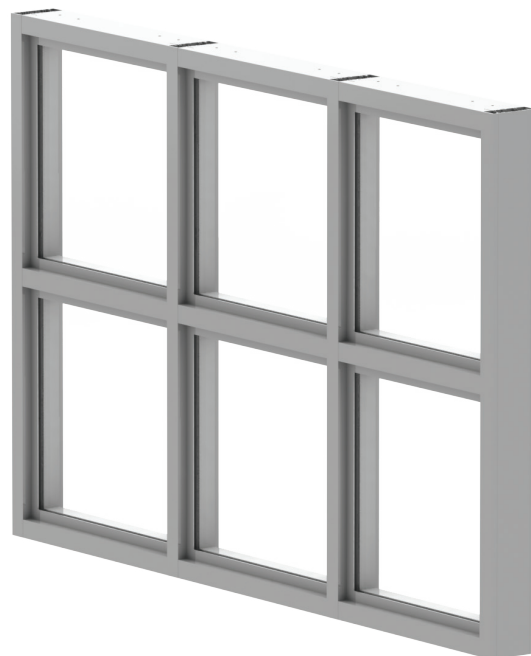
The ES-8000 is an impact resistant storefront system. This product is pre-assembled with screw spline construction and pre-glazed ready to install. The ES-8000 is compatible with the ES-9000 impact door.

Features

- LMI (Large missile impact)
- Frame depth: 5"
- Sightline frame: 13/4" + 1" recessed fin
- Designed for 9/16" laminated glass
- Maximum size: 60" width x 144" height
- Maximum size: 72" width x 120" height
- Minimum curving radius for architectural shapes: 20"
- Integral door adaptor
- Screw cover
- Surface applied O.G or flat muntins

Performances

- Large missile impact
- Design load: +130/-130 PSF.
- Water infiltration: 19.5 PSF.
- U-value: 1.04 (1/4 SB70 + 090 PVB + 1/4 Clear)



ES-8000T

The ES-8000T is an impact resistant, thermal storefront system. This product is isolated with pour and debridge for a superior thermal performance. The ES-8000T storefront system is compatible with the ES-9000 impact door.

Features

- Frame depth: 5"
- Sightline frame: 2 3/4"
- Designed for 1 3/16" insulating laminated glass
- Maximum size: 48" width x 144" height
- Integral door adaptor
- Screw cover
- Pour and debridge
- Pre-assembled and pre-glazed
- Surface applied ogee or flat muntins
- Thermally broken system

Performances

- Large missile impact
- Tested design load: +90/-120 PSF.
- Tested water infiltration: 13.5 PSF.
- Air infiltration: 13.5 PSF.
- U-value: 0.43 (1/4 SB70XL + AIR + 1/4 Clear + 90 SGP + 1/4 Clear)



Brickell Flatiron
Miami, Florida

1000



WINDOWS & DOORS



ESWINDOWS' architectural window & door systems offer occupants privacy and security in their design, meeting performance characteristics for thermally broken, blast and hurricane resistance. These products integrate seamlessly into our storefront, curtain wall, and window wall systems.

500Y

The 500Y has 3 1/2" deep frame. This single-hung window can be easily adapted to any design, following the strictest construction specifications and architectural standards of safety and durability. 500Y can be used in residential and commercial projects.

Features

- Hung window
- Frame depth: 3 1/2"
- Designed for monolithic and laminated glass
- Available for Window Wall inserts in OXO configuration
- Spiral balances
- Bottom spring latch or sweep lock options
- Fully weather-stripped
- Fixed and operable panels
- Window Wall configuration available with custom mullion
- Screens available: aluminum frame and fiberglass mesh
- Maximum size:
 - Single Hung: 54" width x 78" height
 - Window Wall OXO: 48" width x 110 3/16"

Performances

- Large and small missile impact
- Design load: +100/-140 PSF.
- Water infiltration: 19.5 PSF.



PH-4400

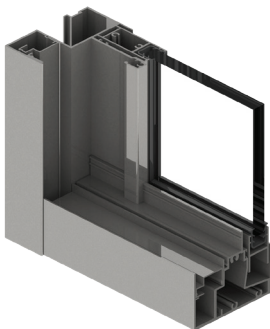
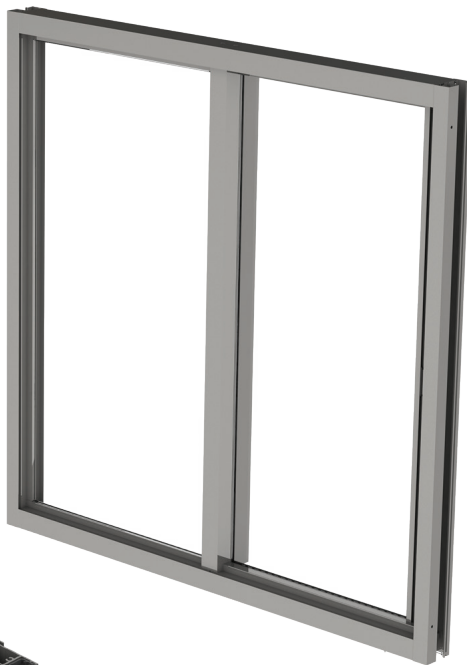
The PH-4400 is a 4 3/16" deep single-hung window which adapts easily to any design, following the strictest construction specifications and architectural standards of safety and durability. This window can be used in residential and commercial projects.

Features

- Large and Small missile impact
- Frame depth: 4 3/16"
- Designed for 1 1/4" insulating laminated glass
- Maximum sizes:
 - Two lites: Width:47" Height: 59"
 - Three lites: Width:48" Height: 119 1/2"
- Ultra lift balances
- Window wall option
- Fully weather-stripped
- Surface applied ogee or flat muntins

Performances

- Design loads: +120/-120 psf. SMI and LMI.
- U-Value: 0.62 (6 mm SB70XL + Arg + 6 mm CL + 090 + 6 mm CL)
- Water infiltration: 12 PSF.
- Anodized, painted or wood grain finishes available
- Screens available: aluminum frame and fiberglass mesh



HR-2600

The HR-2600 is an impact rated horizontal roller window. This product meets the most stringent Miami Dade County specifications and its design is attractive for a wide range of applications.

Features

- Designed for laminated glass
- Maximum window size:
 - 2 panel 112"x 80 3/4"
 - 3 panels 161"x 80 3/4"
- Frame depth: 3 7/8".

Performances

- Large and small missile impact
- Design load: +120/-120 psf SMI and LMI
- Water infiltration: 18 psf.
- U-value: 1.14 (1/4 SB70XL + 060PVB + 1/4 Clear)
- Fully weather-stripped
- Anodized, painted or wood grain finishes available

2400 ST

The 2400 ST is a 5 1/2" impact rated, heavy duty, sliding glass door, with a practical and sober design. This product meets the most stringent specifications and high safety standards. This door is ideal for exterior areas.

Features

- Frame depth: 5 1/2"
- Sill height: 3 3/8"
- Panel width: 50"
- Panel height: 132"
- Configurations: OX, XO, OXO, OXXO
- Designed for 9/16" laminated glass
- Maximum size: 192" width x 144" height
- Two point lock with ergonomic handle
- Exterior key locking option
- Unanchored jamb option available
- Heavy duty, adjustable tandem polyamide ball bearing rollers
- Exterior key locking option
- Screen options available
- Juliet Balcony option available

Performances

- Large and small missile impact rated
- Design load: +131/-131 psf SMI and LMI
- Water infiltration: 19.65 PSF.



DM-12

The DM-12 is a 5 1/2" deep impact rated, heavy duty sliding glass door. This product meets the most stringent specifications and high safety standards. The DM-12 is ideal for exterior areas.

Features

- Frame depth: 5 1/2"
- Sill height: 3 3/8"
- Configurations: OX, XO, OXO, OXXO
- Designed for 9/16" laminated glass
- Maximum size: 192" x 144" OXXO
- Adjustable tandem polyamide ball bearing rollers
- Two point lock with ergonomic handle
- Exterior key locking option
- Heavy duty, adjustable tandem polyamide ball bearing rollers
- Fully weather-stripped
- Anodized, painted or wood grain finishes available
- Screens available in aluminum frame and fiberglass mesh
- Silicone gaskets for improved durability
- Free standing jamb optional

Performances

- Large and small missile impact
- Design load: +125/-165 psf.
- Water infiltration: 18.75 psf.



ES-9000

The ES-9000 is a 2 1/4" thick impact rated entrance doors ideal for high traffic areas such as office and commercial buildings, due to their durability and high security standards. The ES-9000 is compatible with the ES-8000 and the ES-9500 storefront systems.

Features

- Frame depth: 5"
- Sightline frame: 13/4" or 2 1/2"
- Outswing motion
- Available with butt hinges or offset pivots
- Designed for 9/16" laminated and 1 1/16" insulating laminated glass
- Maximum size:
 - Width: X 47", XX 89"
 - Height: 110 1/2"
- Variety of accessories including three-point lock, concealed vertical rod exit devices, overhead concealed closer, push-pull handle, etc.
- Pre-assembled door leaf
- Fully weather-stripped
- Stainless steel hardware
- High and ADA thresholds
- Corners are reinforced with welded aluminum brackets

Performances

- Large and small missile impact
- Design loads:
 - +120/-120 psf (Single Door) SMI
 - +90/-90 psf (double door) SMI and LMI
- Water infiltration: 18 PSF.
- U-value: 0.74 (1/4 SB70XL + Arg + 1/4 Clear + 060PVB + 1/4 Clear)



PH-3200

Features

- Two tracks configuration
- 2-4 panels configurations
- Optional screen for two tracks frame
- Large and small missile impact rated
- Frame depth: 6 1/16"
- Sill height: 3 3/8"

Performances

- Designed for Insulating laminated glass
- Large missile impact:
 - G1: 1/4" TEMP. Glass + 1/2" Air spacer + 1/4" H.S. Glass + 0.090 Sentryglass + 1/4" H.S. Glass
- Small missile impact:
 - G2: 1/4" TEMP. Glass + 1/2" Air spacer + 1/4" H.S. Glass + 0.060 PVB + 1/4" H.S. Glass
 - G3: 1/4" TEMP. Glass + 1/2" Air spacer + 1/4" H.S. Glass + 0.035 PVB + 1/4" H.S. Glass
- Air infiltration: 6.24 psf
- Water infiltration: 18 psf
- Design load: +120/-120 psf



RAILINGS

ESWINDOWS railings are modular glass railing systems with variations in its design. The aluminum frames are pre-assembled from the factory and embedded into concrete on site. Vertical mullions slide into each other to assemble the railing and the glass panels are placed on the horizontal hooks and are secured with the cap.

ES-RL3030

ES-RL3030 is a modular glass railing system. The aluminum frames are pre-assembled from the factory and embedded into concrete on site. Vertical mullions slides into each other to assemble the railing. Glass panels are placed on the horizontal hooks and secured with the cap.

Features

- Four railing cap options available
- Options of bottom rail available
- Pre-assembled & glazed
- Reinforcement available
- For embedding into concrete
- Cap width: 5 3/4", 6 1/4" or 5 1/2"
- Mullion size: 3" x 3"
- Hidden verticals
- Designed for 7/16" laminated glass
- Maximum tested size:
 - Panel width: 61 1/2"
 - Panel height: 44"

Performances

- Design load: +/- 120 PSF.
- Tested and certified TAS202, ANSI Z97, ASTM E935
- Anodized, painted or wood grain finishes available
- Silicone gaskets for improved durability
- 90° corner profile available



ES-RL3525

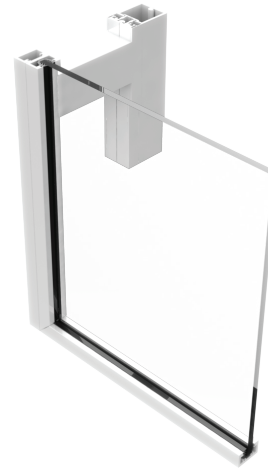
ES-RL3525 is a glass surface railing system with two variations in design; type one with in front of slab modules and type two with over slab modules. This railing, designed for embedding into concrete, is safe to be used in interiors and exteriors.

Features

- For interior and exterior use
- For embedding into concrete
- Corner options available 90°, 63° and 117°
- Pre-assembled glass panels
- Designed for: 1/2" or 3/8" tempered glass
- 2 1/2" width
- Railing depth: 12" (in front of slab), 11" (over the slab modules)
- Maximum tested size:
 - Panel width: 5'-4 5/16".
 - Frame height: 5'-6 1/2"

Performances

- Design loads: +/-135 PSF (In front of slab), +/-140 PSF. (Over slab glass modules)
- Pull test: 400lb. 2 1/2" mullion depth
- Anodized, painted or wood grain finishes available
- Silicone gaskets for improved durability





Imagine Extraordinary



EXPERTISE

ENGINEERING AND DESIGN

We specialize in providing solutions for the most complex projects and responding efficiently to the requests of architects and developers. The combination of advanced software technology and a team of engineers and designers who specialize in aluminum, glass, window systems and façades, allow us to ensure delivery of high-quality products that meet our customers' needs.

SERVICE

Our engineers and designers provide ongoing assistance and technical support to ensure the best solution for each type of project. We offer each customer complete and personalized guidance, pointing out the main factors to consider in order to plan and carry out their construction with maximum benefits.



imagine
extraordinary



IGCC

INSULATING GLASS CERTIFICATION COUNCIL



Safety Glazing Certification Council



Vitro Certified™
INTERNATIONAL FABRICATOR

CERTIFICATIONS

Our Quality Control Program is proof of our constant commitment to surpass accepted quality standards. We are certified by the top companies in the industry to ensure that our products and services stay up to date and comply with the stringent rules and regulations of the industry. Our heat-treated glass is processed under the **Vitro Certified International Fabricator Program** that limits heat-treated flatness to a new standard.

All content in this document is protected by copyright laws and is property of E.S. WINDOWS, LLC, its affiliates, or a licensed third party and may be modified without prior notice. Reproduction, modification, dissemination, distribution, sell or transfer, either in whole or part, without prior written permission is prohibited.

2023 © E.S. WINDOWS, LLC.
V - Jan 2025